



Town of Portugal Cove-St. Philip's

DISCRETIONARY USE

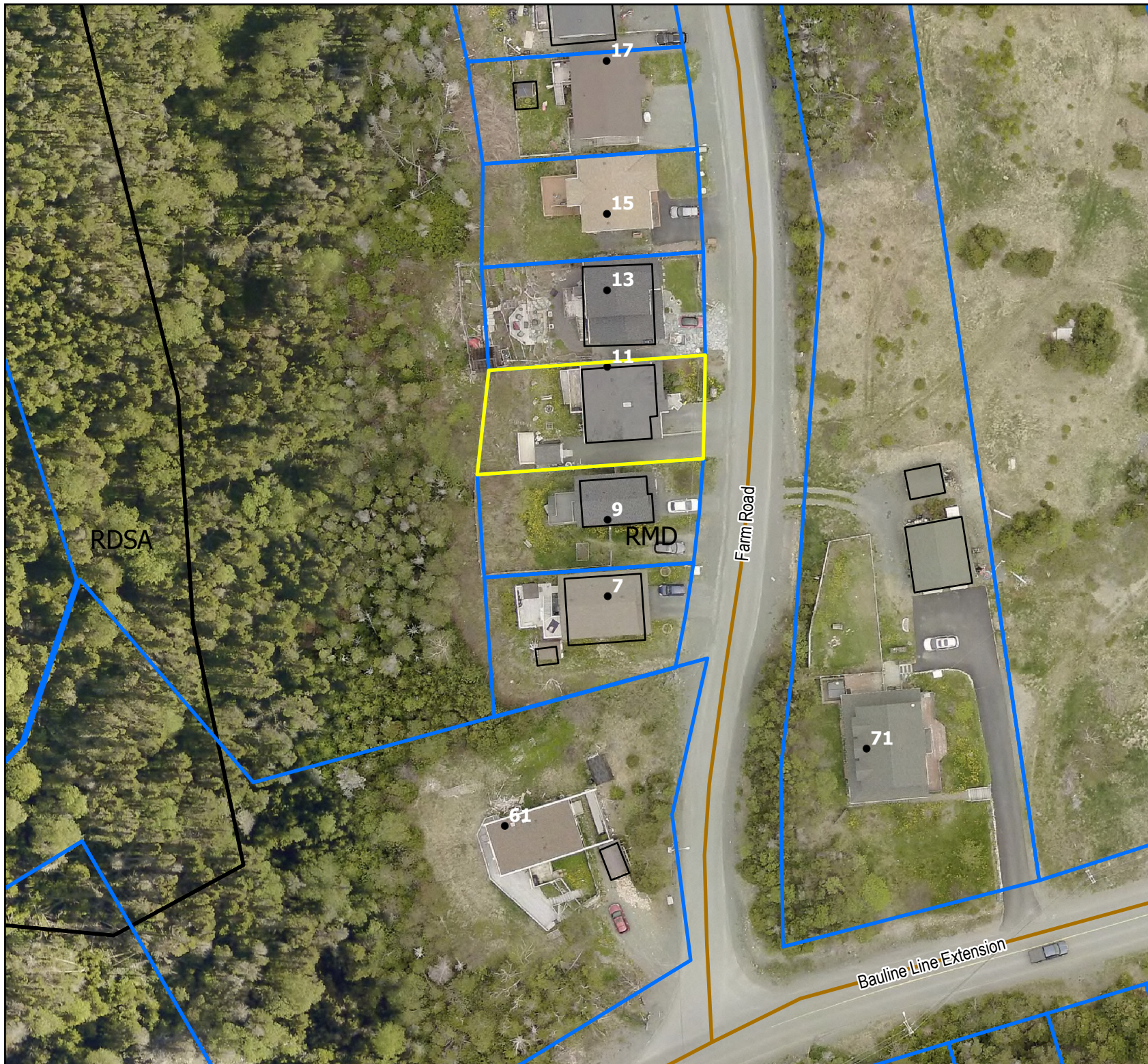
The Town of Portugal Cove-St. Philip's has received an application to operate a boarding house residential use (short term rental – AirBnB) from the existing dwelling at No. 11 Farm Road. Parking will be provided on site. The property is zoned Residential Medium Density which permits Boarding House Residential as a Discretionary Use. Development Regulations No. 33 and 102 requires the advertisement of a proposed Discretionary Use. Any person(s), who feel that this application may adversely affect them, should contact the Town Office in writing on or before **May 30, 2025**.

For more information, contact the Planning & Development Department at 709-895-8000 (Option 4) or planning@pcsp.ca.

Town of Portugal Cove-St. Philip's
1119 Thorburn Road
Portugal Cove-St. Philip's, NL
A1M 1T6

Property Map

No. 11 Farm Road



Scale: 1:750

0 6.5 13 19.5 26 m

DISCLAIMER

The land use information contained on the Map is compiled from various sources. It may or may not accurately portray base mapping, measurements, property boundaries, or other land use information.