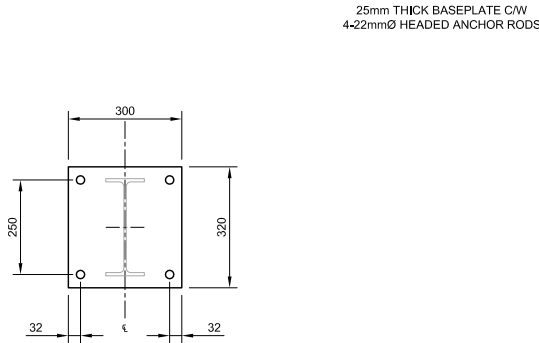


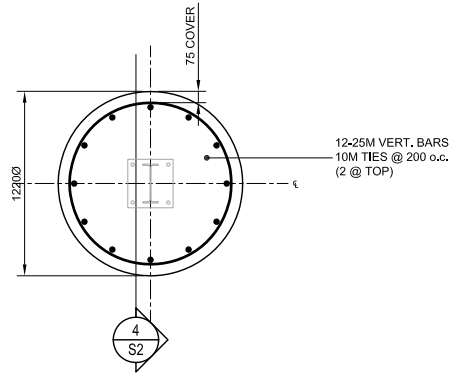
Copyright DBA Ltd. Wed, Aug 11 2021 09:05 AM
P:\21131 (PCSP Sign Base)\Drawings\Latest Drawings\21131 S1-S2.dwg



BASEPLATE "BP1" DETAIL

SCALE - 1 : 20

5
S2



SECTION

SCALE - 1 : 50

3
S2

- GENERAL NOTES:**
- ALL STRUCTURAL STEEL SHALL CONFORM TO CSA G40.21-350W.
 - ALL STRUCTURAL STEEL SHALL BE FABRICATED, ERECTED, AND INSTALLED IN ACCORDANCE WITH CSA S16 LATEST EDITION.
 - ALL WELDED SHALL BE CARRIED OUT IN ACCORDANCE WITH CSA W59 BY A FABRICATOR FULLY APPROVED.
 - USE A307 ANCHOR RODS.
 - USE 25MPa CONCRETE.
 - THE SIGN AND ITS ATTACHMENTS TO THE STEEL POSTS HAVE NOT BEEN REVIEWED OR DESIGNED BY DBA, SIGN FRAMING AND ATTACHMENT TO BASE STRUCTURE BY OTHERS.

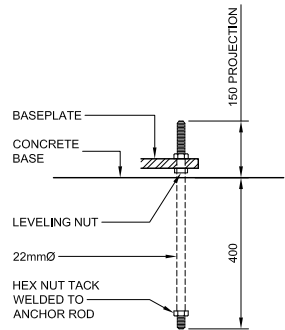
WIND DESIGN LOADS (UNFACTORED):
(AS PER 2015 NATIONAL BUILDING CODE AND USERS GUIDE - STRUCTURAL COMMENTARIES)

BASIC WIND LOAD (q 1/50) = 0.78kPa

GENERAL NOTES

SCALE - N.T.S.

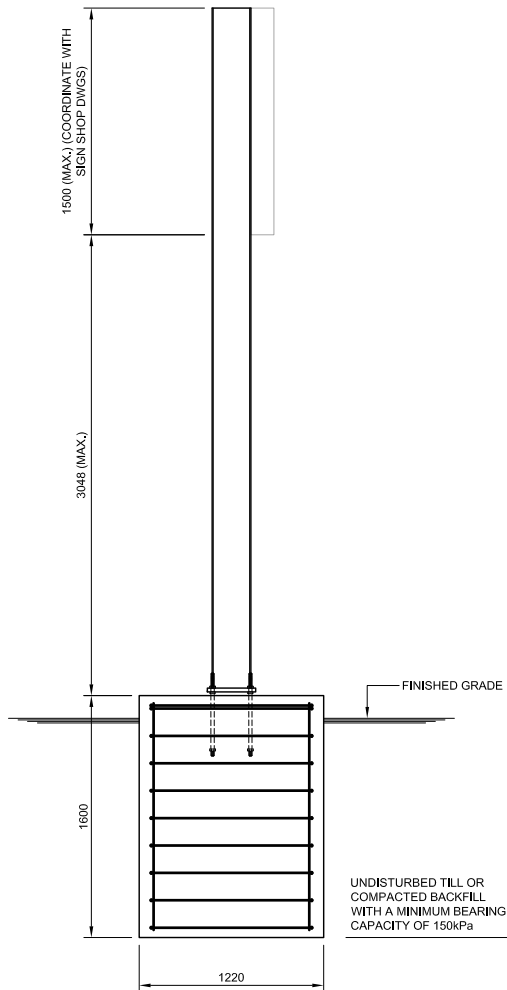
1
S2



ANCHOR ROD DETAIL

SCALE - 1 : 20

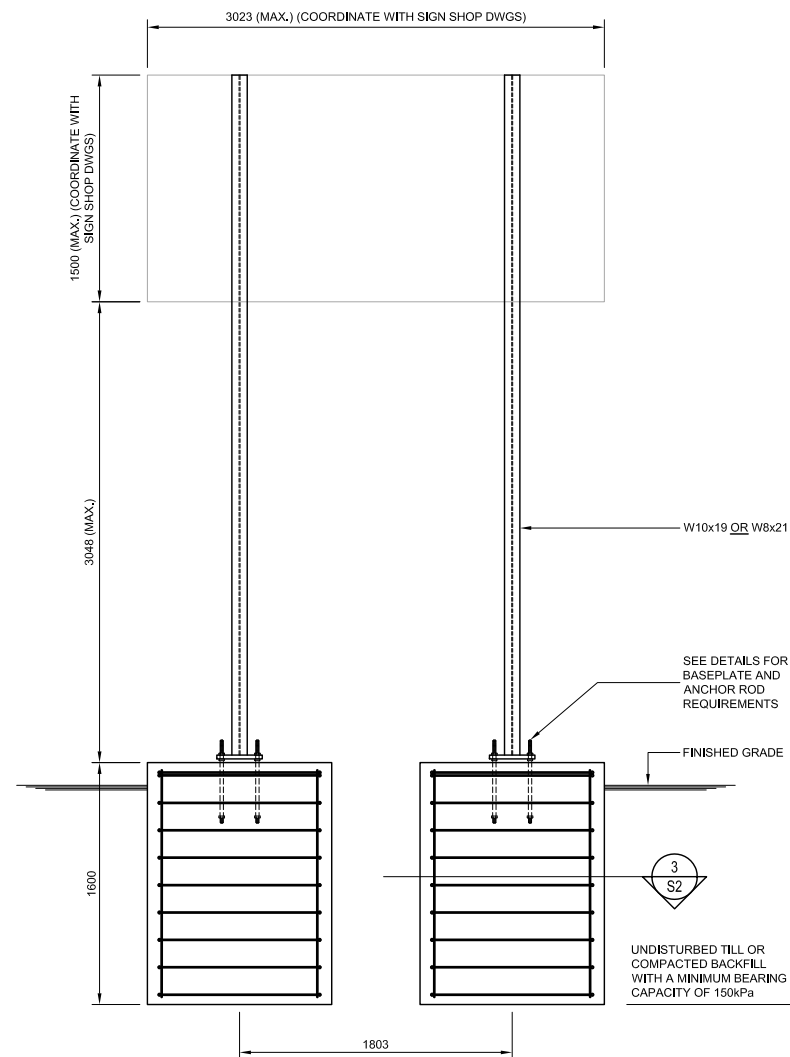
6
S2



SECTION

SCALE - 1 : 50

4
S2



ELEVATION

SCALE - 1 : 50

2
S2

Notes :

- Do not scale from drawing.
- Contractor must verify all dimensions on site before proceeding with this work.
- This Drawing is not to be used for construction unless it is issued for construction and stamped and signed by the Project Engineer.

0	ISSUED FOR CONSTRUCTION	2021-08-10
No.	DESCRIPTION	DATE

COMPANY STAMP

PROVINCE OF NEWFOUNDLAND AND LABRADOR
PEG PERMIT HOLDER
This Permit Allows
DBA CONSULTING ENGINEERS LTD.

To practice Professional Engineering in Newfoundland & Labrador.
Permit No. as issued by PEG 00189
which is valid for the year 2021.

ENGINEERS STAMP

08799
Robyn C. O'Donnell
SIGNATURE
REGISTERED PROFESSIONAL ENGINEER
NEWFOUNDLAND & LABRADOR

CLIENT

STRUCTURAL CONSULTANT

DBA CONSULTING ENGINEERS LTD.

Structural and Civil Engineers Tel 709.739.5500 Fax 709.739.5560

PROJECT

PCSP SIGN BASE

PORTUGAL COVE - ST. PHILIPS, NL

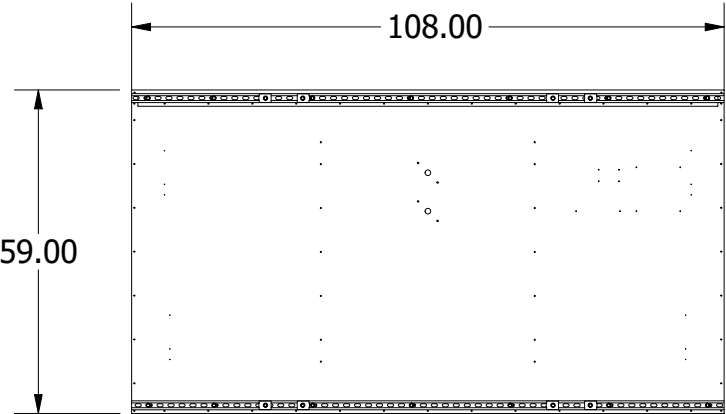
DRAWING

**SECTIONS & DETAILS
OPTION 2**

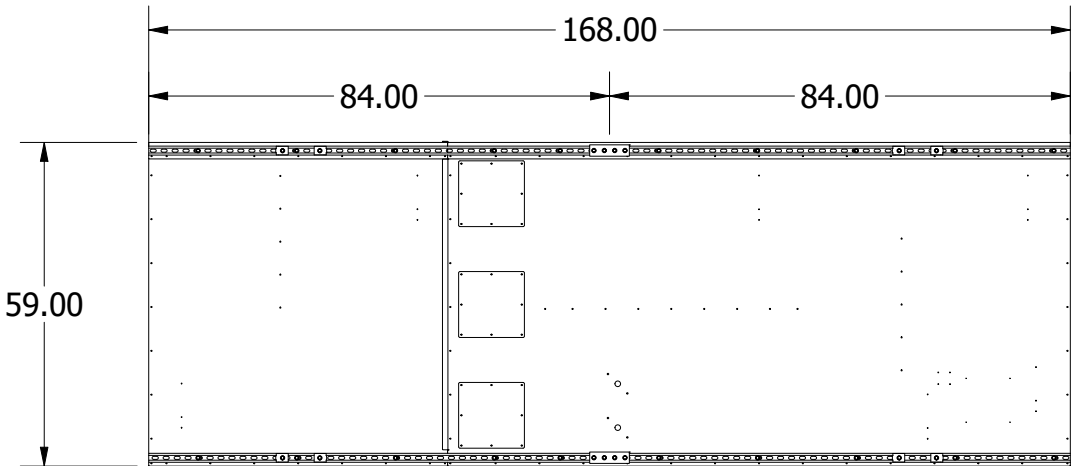
DRAWN BY C.R.	DESIGNED BY R.O'D.	CHECKED BY R.O'D.
APPROVED BY R.O'D.	PROJECT NO. 21131	DATE JULY, 2021
SCALE AS NOTED	SHEET 2 OF 2	DRAWING NO. S2

SINGLE CHANNEL UNISTRUT INSTALLATION

INSTRUCTIONS-OUTDOOR


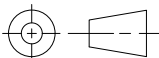


SINGLE CABINET ENCLOSURE
(= \leq 59" H, \leq 119" W)
(2 ROWS - SINGLE PIECE)



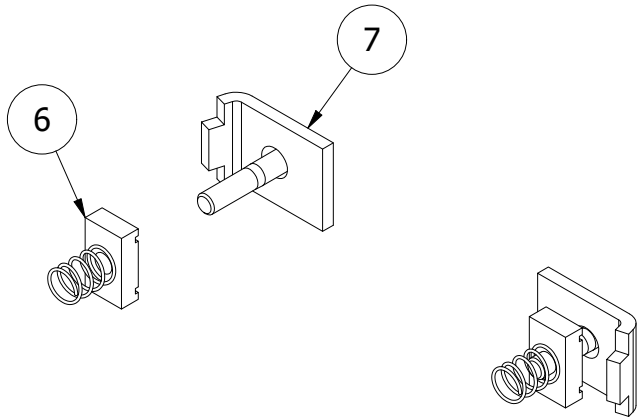
MULTI CABINET ENCLOSURE
(= \leq 59" H, $>$ 119" W)
(2 ROWS - MULTIPLE PIECES)

REVISION HISTORY			
REV	DESCRIPTION	DATE	AUTHOR
A	INITIAL RELEASE	4/3/2019	BR

PART NUMBER: SINGLE CHANNEL UNISTRUT INSTALLATION INSTRUCTIONS-OUTDOOR		 Inc. 4056 Blakie Road, London, ON, N6L 1P7 Tel: (519) 652-5833 Fax: (519) 652-3795 Email: oes@oes-inc.com	
NOTICE TO PERSON RECEIVING THIS DRAWING AND TECHNICAL INFORMATION: OES INC. CLAIMS PROPERTY RIGHTS TO THE MATERIAL DISCLOSED HEREIN. THIS DRAWINGS INCLUDES UNPUBLISHED PROPRIETARY MATERIAL DEVELOPED BY OES INC. AND AS SUCH IS NOT TO BE COPIED, REPRODUCED OR USED IN ANY WAY WITHOUT PRIOR WRITTEN AUTHORIZATION FROM OES INC.			
TOLERANCE INFORMATION Dimensions are in inches Fractional ± 1/16" Two Place Decimals ± 0.02" Three Place Decimals ± 0.005" Four Place Decimals ± 0.0005" Angular ± 2'		DESCRIPTION SINGLE CHANNEL UNISTRUT INSTALLATION INSTRUCTIONS-OUTDOOR	
THIRD ANGLE PROJECTION 		SIZE B FILENAME SINGLE CHANNEL UNISTRUT INSTALLATION INSTRUCTIONS-OUTDOOR.idw USE FOR CONSTRUCTION	INIT DRAWING DATE 4/3/2019 REV A
SCALE NTS		DRAWN BY BROOK	PAGE 1 OF 4

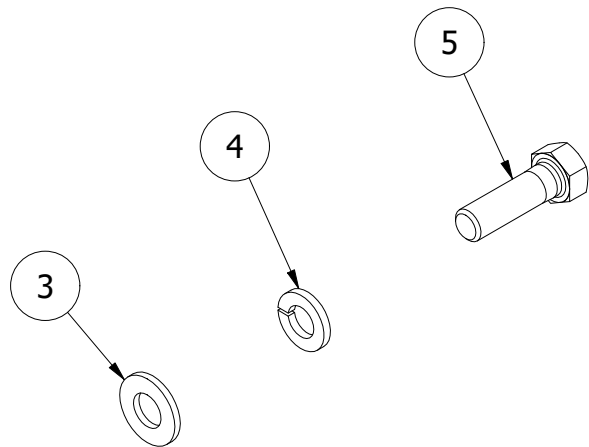
PARTS LIST		
ITEM	PART NUMBER	DESCRIPTION
1	SCOREBOARD	
2	HW600A	UNISTRUT-120
3	SB-HW534D	3/8 IN FLAT WASHER
4	SB-HW534E	3/8 SPRING LOCK WASHER
5	SB-HW534A	3/8-16 UNC - 1.25
6	HW600C+	UNISTRUT SPRING NUT
7	HW507D+	UNISTRUT BEAM CLAMP P1386

HARDWARE & PARTS ASSEMBLY



DETAIL A

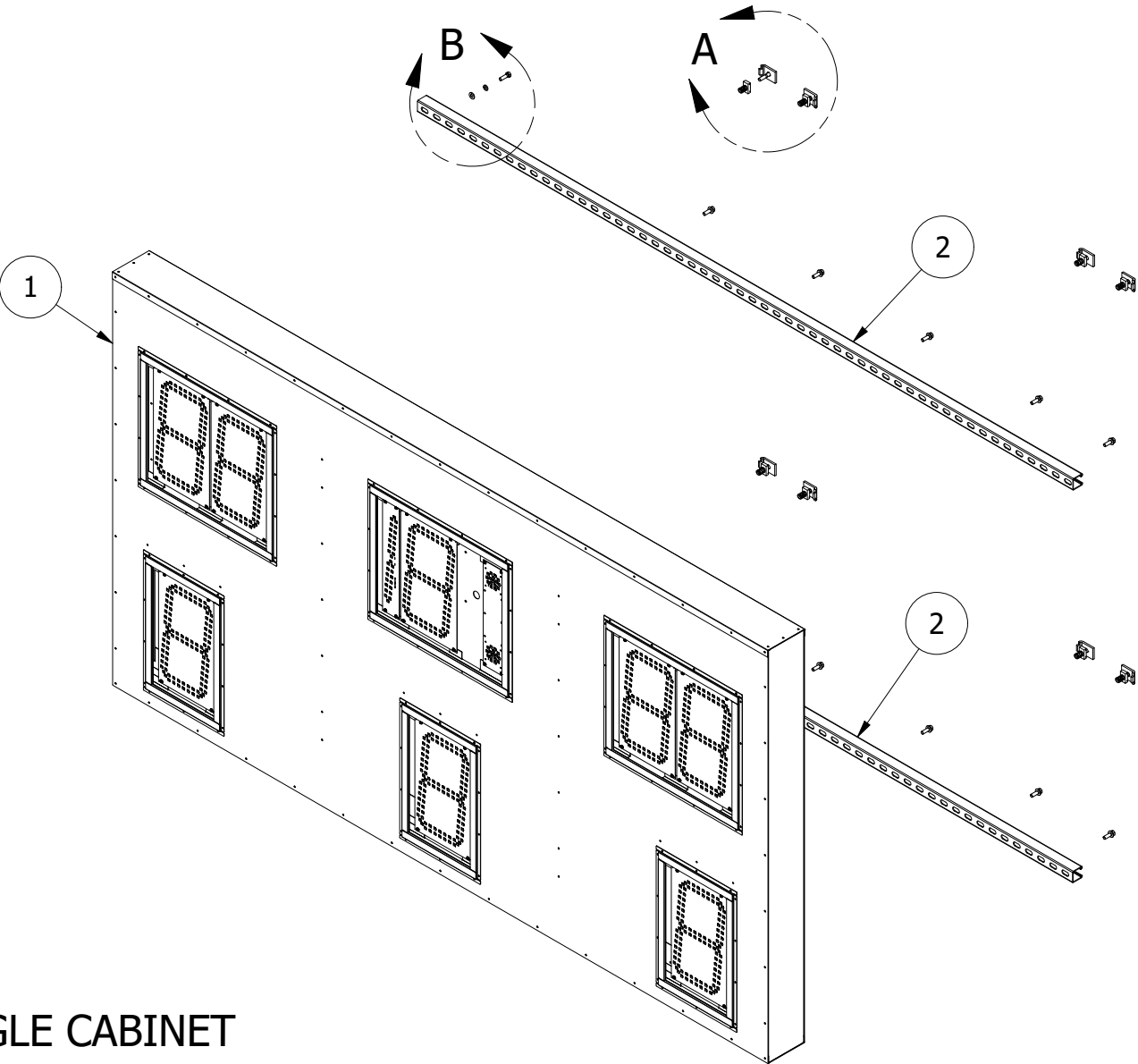
HARDWARE TO FASTEN UNISTRUT TO ENCLOSURE


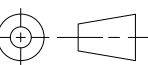


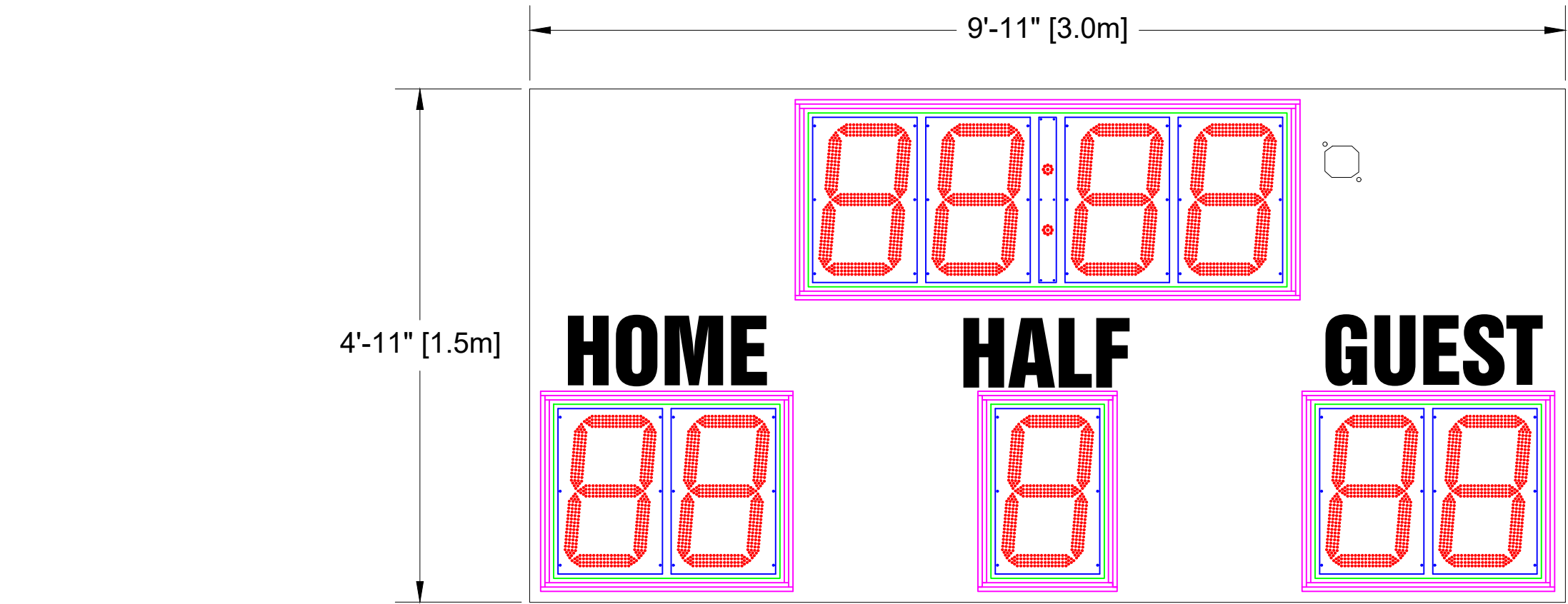
DETAIL B

HARDWARE & PARTS FOR INSTALLING ENCLOSURE TO I-BEAMS
(SHIPPED SEPARATELY IN BAG WITH ENCLSURE)

SINGLE CABINET
2 ROWS
(SINGLE PIECE)



PART NUMBER: SINGLE CHANNEL UNISTRUT INSTALLATION INSTRUCTIONS-OUTDOOR		 OES Inc.		4056 Blakie Road, London, ON, N6L 1P7 Tel: (519) 652-5833 Fax: (519) 652-3795 Email: oes@oes-inc.com	
NOTICE TO PERSON RECEIVING THIS DRAWING AND TECHNICAL INFORMATION: OES INC. CLAIMS PROPERTY RIGHTS TO THE MATERIAL DISCLOSED HEREIN. THIS DRAWINGS INCLUDES UNPUBLISHED PROPRIETARY MATERIAL DEVELOPED BY OES INC. AND AS SUCH IS NOT TO BE COPIED, REPRODUCED OR USED IN ANY WAY WITHOUT PRIOR WRITTEN AUTHORIZATION FROM OES INC.		DESCRIPTION SINGLE CHANNEL UNISTRUT INSTALLATION INSTRUCTIONS-OUTDOOR			
TOLERANCE INFORMATION Dimensions are in inches Fractional ± 1/16" Two Place Decimals ± 0.02" Three Place Decimals ± 0.005" Four Place Decimals ± 0.0005" Angular ± 2°		THIRD ANGLE PROJECTION 		SIZE B	REV A
		SCALE NTS		DRAWN BY B Brook	
				PAGE 2 OF 4	



Scoreboard Specifications

Overall size: 9'11" (W) x 4'11" (H) x 6" (D)
Approximate Weight: 248 lbs
Incoming Mains Power: (1) 120VAC (+/-10%) 1 Phase, 2 Wire, 60Hz / 8 Amps. Requires an earth ground connection.
Incoming Mains Power and Data Location: Behind the [TIME] Digit(s).


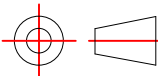
17" LED Digits for ALL

8" White Vinyl Lettering for ALL

All LED digits include the following:

- * Shatter Resistant Lexan cover
- * Conformal coating to protect from environmental conditions
- * Surface Mount Technology LEDs allowing for wider viewing angle

REVISION	DESCRIPTION	AUTHOR	DATE
A	INITIAL DESIGN	OES	3/11/2021

				4056 Blakie Road, London, ON, N6L 1P7 Tel: (519) 652-5833 Fax: (519) 652-3795 Email: oes@oes-inc.com	
		DESCRIPTION			
		OES ELECTRONIC SCOREBOARDS M3010AUXV			
TOLERANCE INFORMATION Dimensions are in Inches		SIZE B	FILENAME M3010AUXV	INIT DRAWING DATE 3/11/21	REV A
Fractional ± 1/16" Two Place Decimals ± 0.02" Three Place Decimals ± 0.005" Four Place Decimals ± 0.0005" Angular ± 30°		USE FOR REVIEW			
		SCALE NTS	DRAWN BY CGTHOMPSON		PAGE 1 OF 1